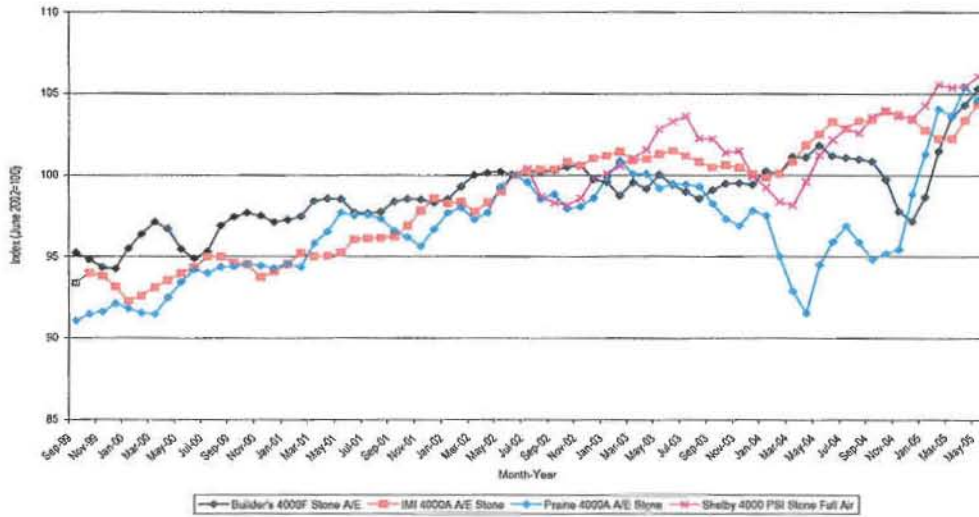


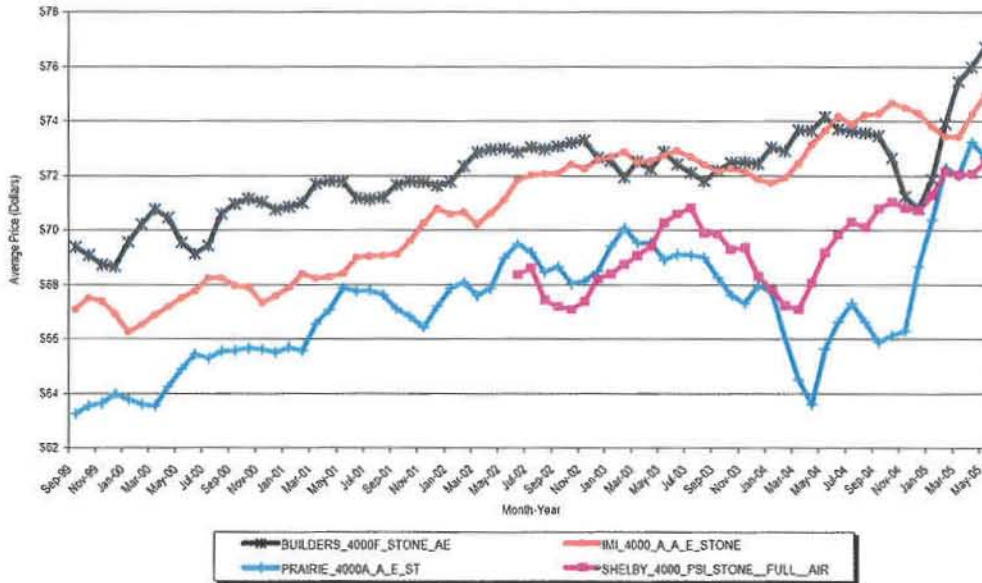
Dr. Beyer's Figure 8

Figure 8. Three Month Moving Average of Similar 4000 PSI Air Entrained Stone Ready-Mixed Concrete Sold in the Central Indiana Area, by Defendant, September 1999-May 2005



Source: Defendant Electronic Data

Dr. Beyer's Figure 8 Without the Price Index

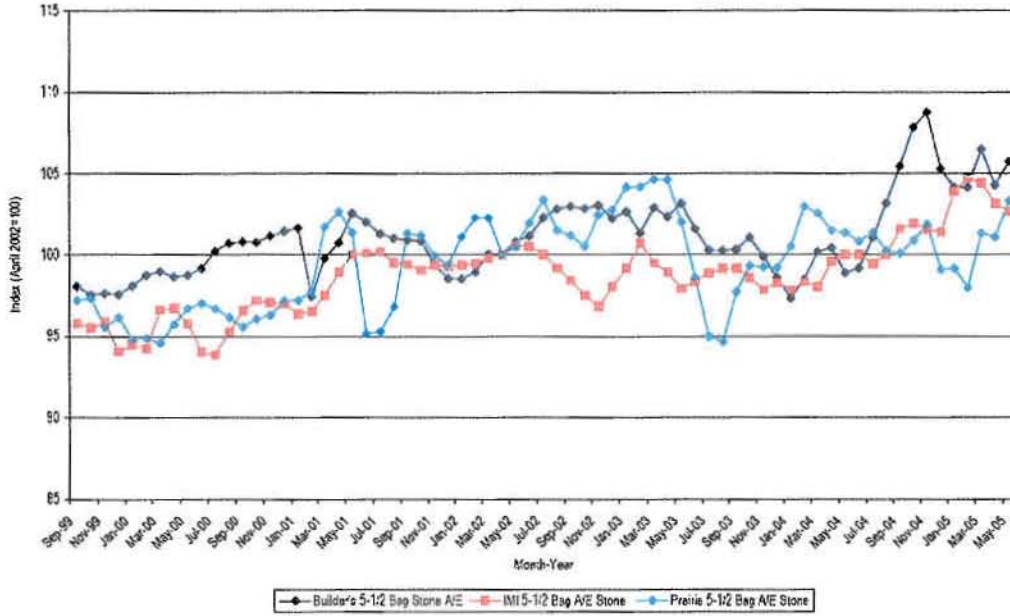


Source: Defendant Electronic Data



Dr. Beyer's Figure 9

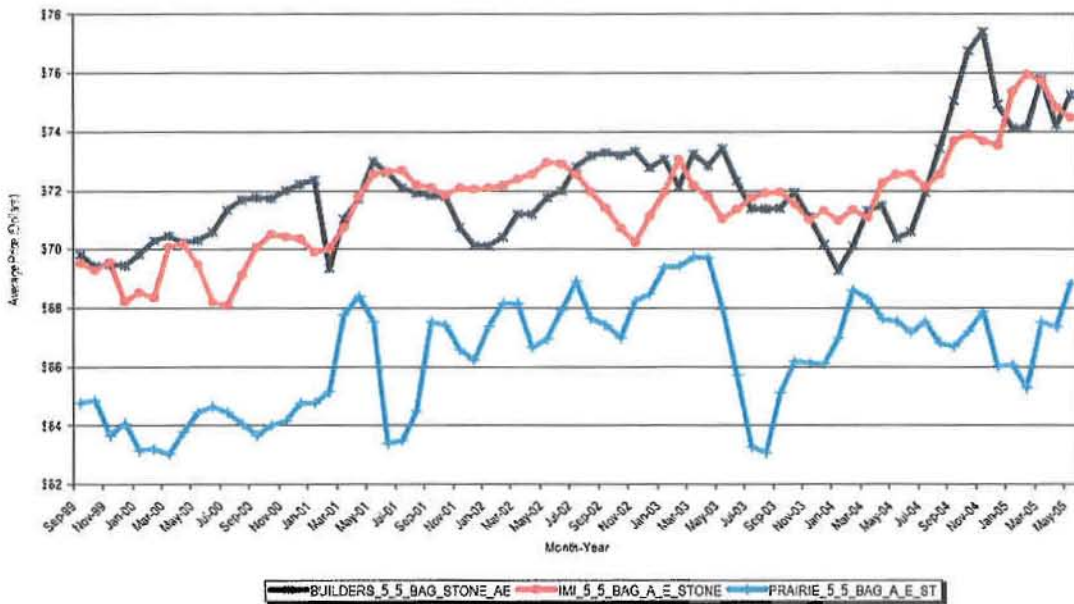
Figure 9. Three Month Moving Average of Similar 5-1/2 Bag Air Entrained Stone Ready-Mixed Concrete Sold in the Central Indiana Area, by Defendant, September 1999-May 2005



Source: Defendants' Electronic Data

Dr. Beyer's Figure 9 Without the Price Index

Figure 9. Three Month Moving Average of Prices For Similar 5-1/2 Bag Air Entrained Stone Concrete Sold in the Central Indiana Area, by Defendant, September 1999-May 2005

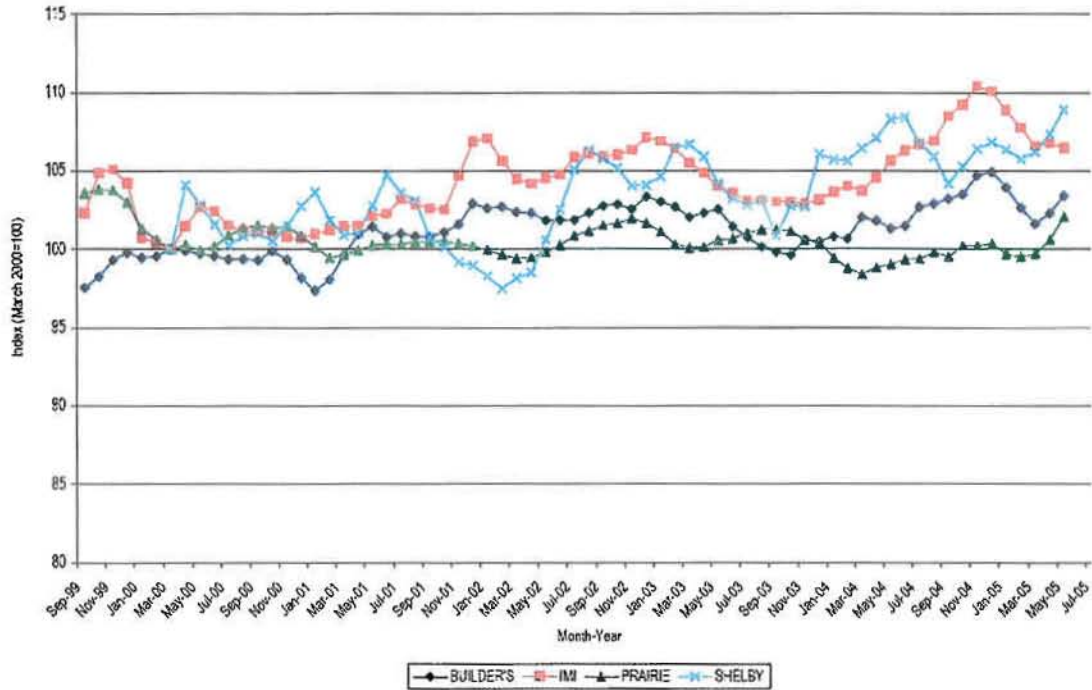


Source: Defendants' Electronic Data



Dr. Beyer's Figure 10

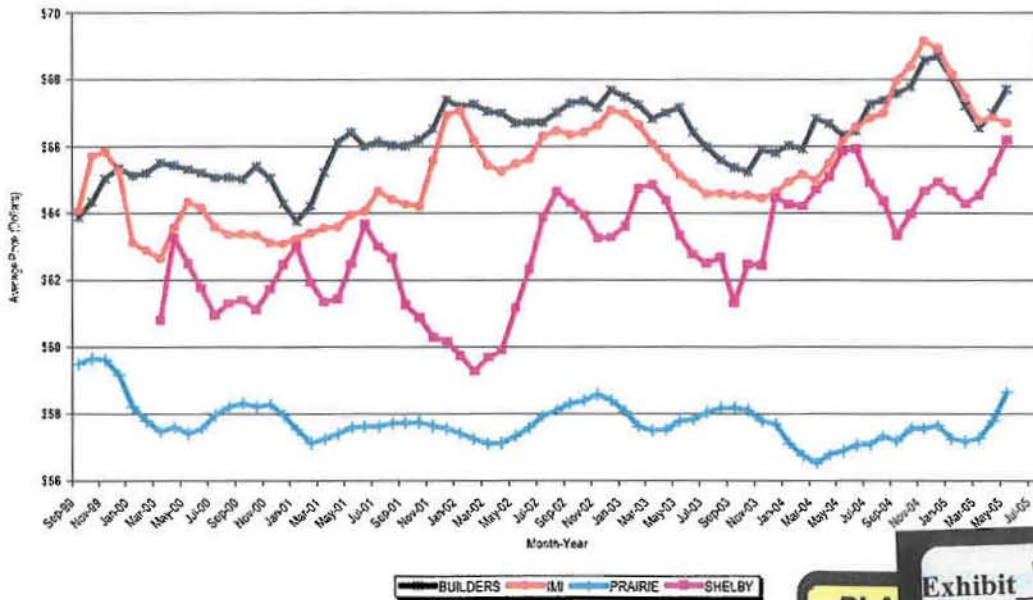
Figure 10. Three Month Moving Average of 3000 PSI Ready-Mixed Concrete Sold in the Central Indiana Area, By Defendant, September 1999-May 2005



Source: Defendant Electronic Data

Dr. Beyer's Figure 10 Without the Price Index

Figure 10. Three Month Moving of Average Prices for 3000 PSI Ready-Mixed Concrete Sold in the Central Indiana Area, By Defendant, September 1999-May 2005



Source: Defendant Electronic Data

PLA EX

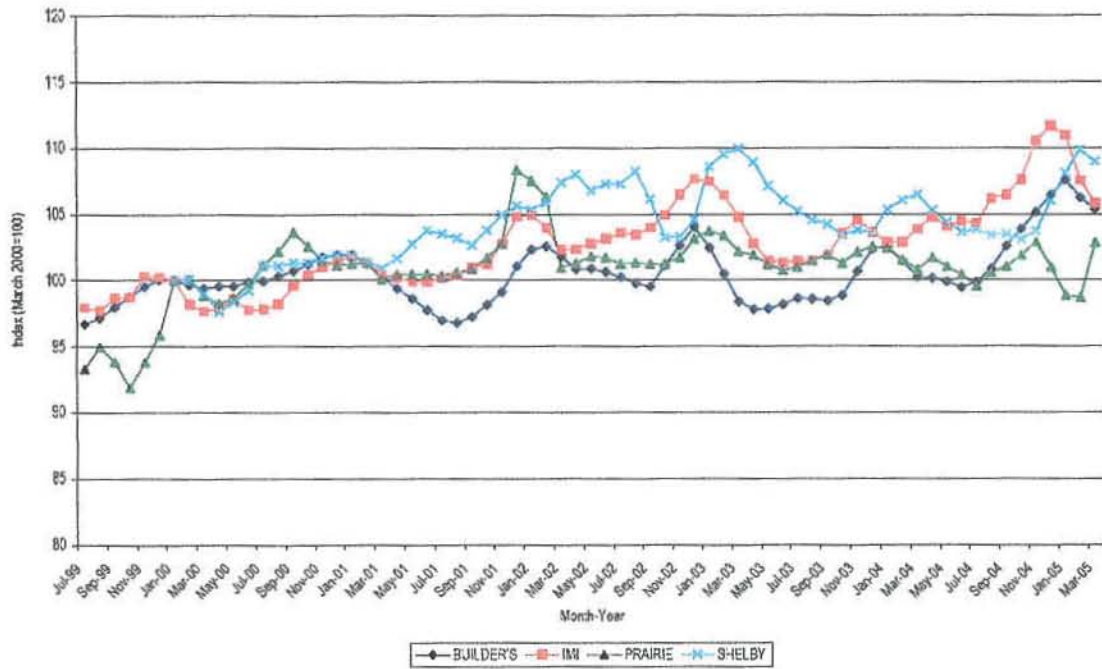
Exhibit 171

Witness _____

Date _____ PEM

Dr. Beyer's Figure 11

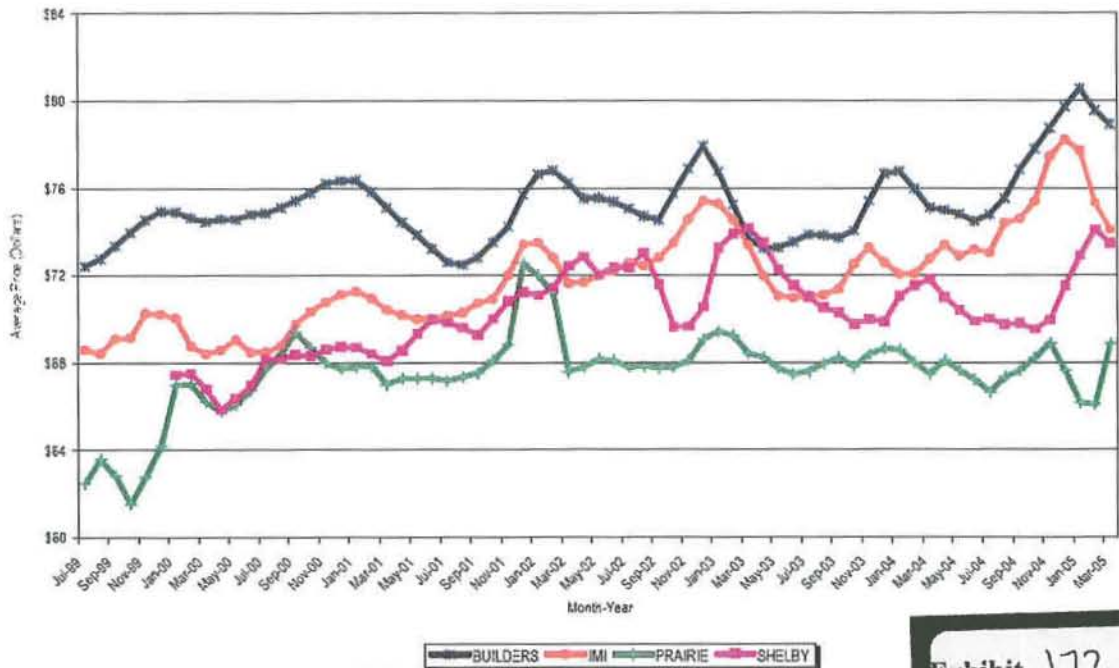
Figure 11. Three Month Moving Average of 6 Bag Ready-Mixed Concrete Sold in the Central Indiana Area, By Defendant, September 1999-December 2005



Source: Defendant Electronic Data

Dr. Beyer's Figure 11 Without the Price Index

Figure 11. Three Month Moving Average of Prices For 6 Bag Ready-Mixed Concrete Sold in the Central Indiana Area, By Defendant, September 1999-December 2005



Source: Defendant Electronic Data

PLAINTIFF'S EXHIBIT

Exhibit 172
 Witness _____
 Date _____ PEM